

岐阜北方集合住宅

KITAGATA APARTMENT RECONSTRUCTION PROJECT, GIFU



KAZUYO SEJIMA

妹島和世



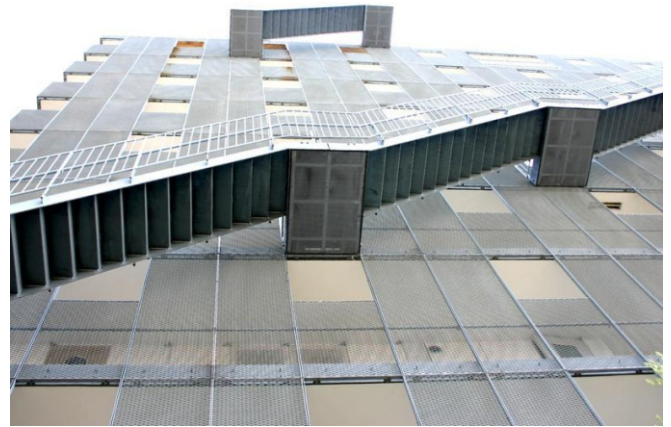
KITAGATA APARTMENT RECONSTRUCTION PROJECT, GIFU
KAZUYO SEJIMA



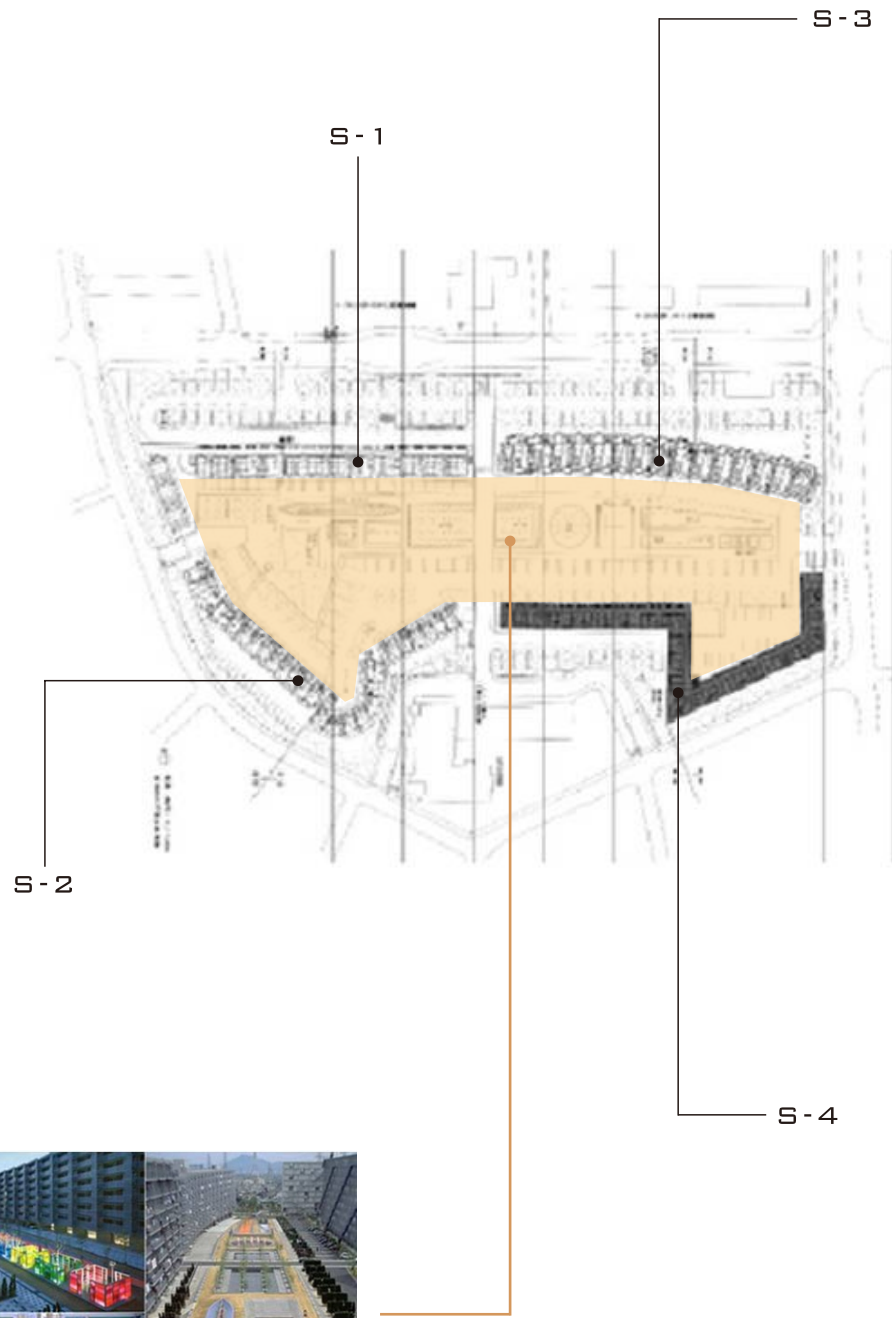
KITAGATA APARTMENT RECONSTRUCTION PROJECT, GIFU
KAZUYO SEJIMA



KITAGATA APARTMENT RECONSTRUCTION PROJECT, GIFU
KAZUYO SEJIMA



KITAGATA APARTMENT RECONSTRUCTION PROJECT, GIFU
KAZUYO SEJIMA



建築名 北方集合住宅
(岐阜地方行政署計畫的大規模公共住宅改建專案)

建築師 妹島和世 Kazuyo Sejima & Associates

時間 1998

地點 日本 岐阜縣

設計 S-1棟 高橋晶子

S-2棟 克利絲汀 霍利

S-3棟 伊莉莎白 迪勒

S-4棟 妹島和世

用途 集合住宅

構造 S-1棟 RC 9層

S-2棟 RC 10層

S-3棟 RC 8層

S-4棟 RC 10層

面積 S-1棟 8934.70 m-sq

S-2棟 9465.08 m-sq

S-3棟 9787.66 m-sq

S-4棟 9559.70 m-sq (2981坪)



藉由量體的圍塑
自然而然的形成了一個內庭式的公共空間

BODY

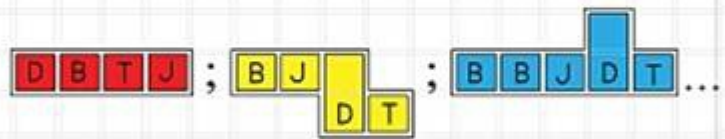
25m



2.3m



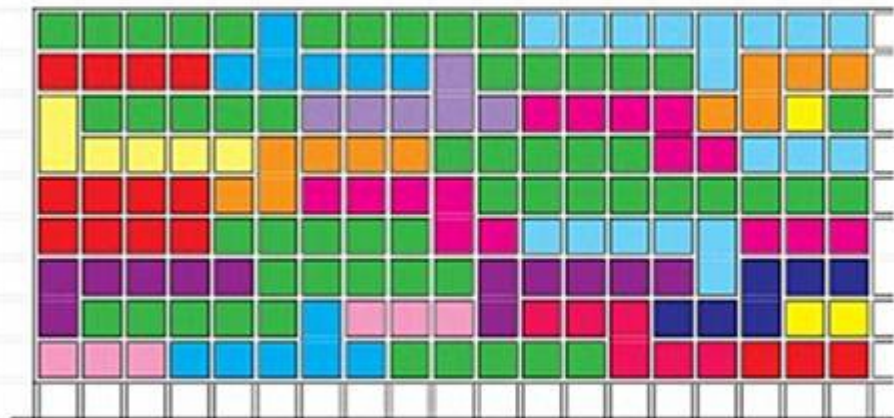
T + B + J + D =



T=terrace, B=bedroom, J=traditional japanese room, D=dining kitchen

"Each unit is made up of Terrace, Dining kitchen, Bedroom, and a Japanese-style room with tatami. These rooms are linked on the front by a narrow sunroom (engawa). The individual room is regarded as the planning unit. By adding these units with different variations, different unit types with various sections emerge, as well as the possibility for different lifestyles." (Segima)

BUILDING

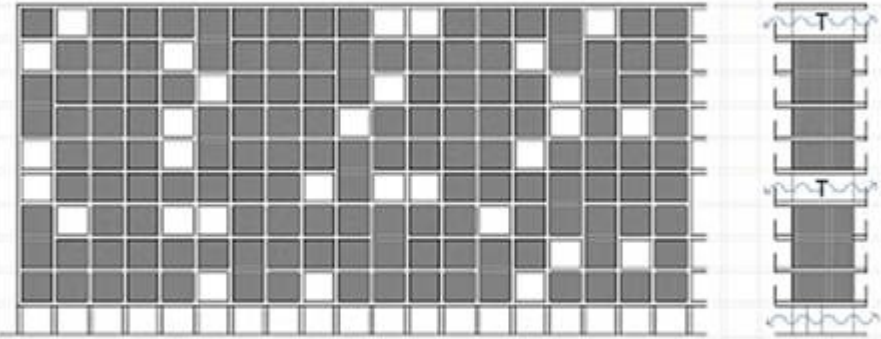


"There is a certain anonymity... a variety in the visual appearance that paradoxically acts to de-emphasize the individual identity of each unit." The composition of the units gives us some privacy, because no one can understand which part belongs to any given family".

T- 陽台 B- 臥房 J - 和室 D- 廚房



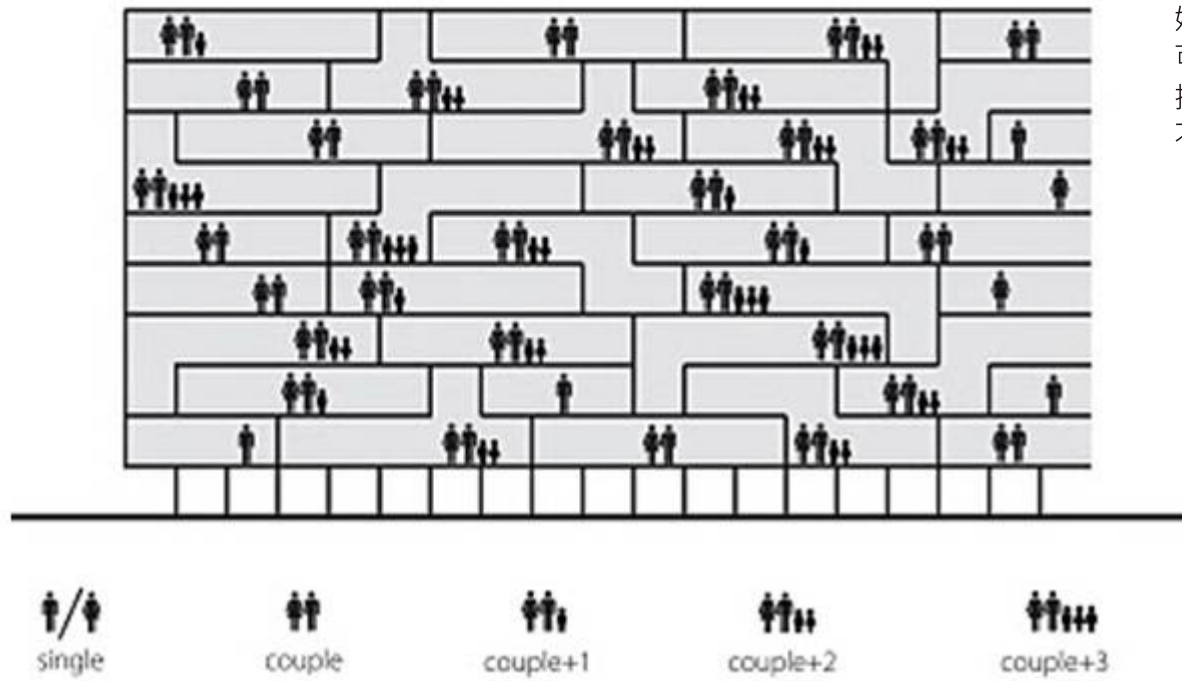
ENVIRONMENT



"In order to control the the massiveness of the built volume, we reduced the whole to a thin slab, perforated by random holes. each apartment has a terrace, and 107 terraces create as many holes in the structure which allow for glimpses through the building to the landscape beyond. Also, the terraces planned as a "room", with the intation of introducing as much exterior space as possible into the living areas."

因為107個陽台在立面上創造了空洞般的效果
使得從樓棟兩側的觀看中
減少了巨大體量對視線的壓迫感

NEIGHBORS



妹島：考慮到這個建築是出租公寓的形式
可以假定各類型的家庭居住在這些單元裡
換言之 我們想像形式不會被限制在現有標準的家庭
不同類型群體的人也需要被考慮到











XIEXIE

林君澤

B9913014
LIN CHUNCHE