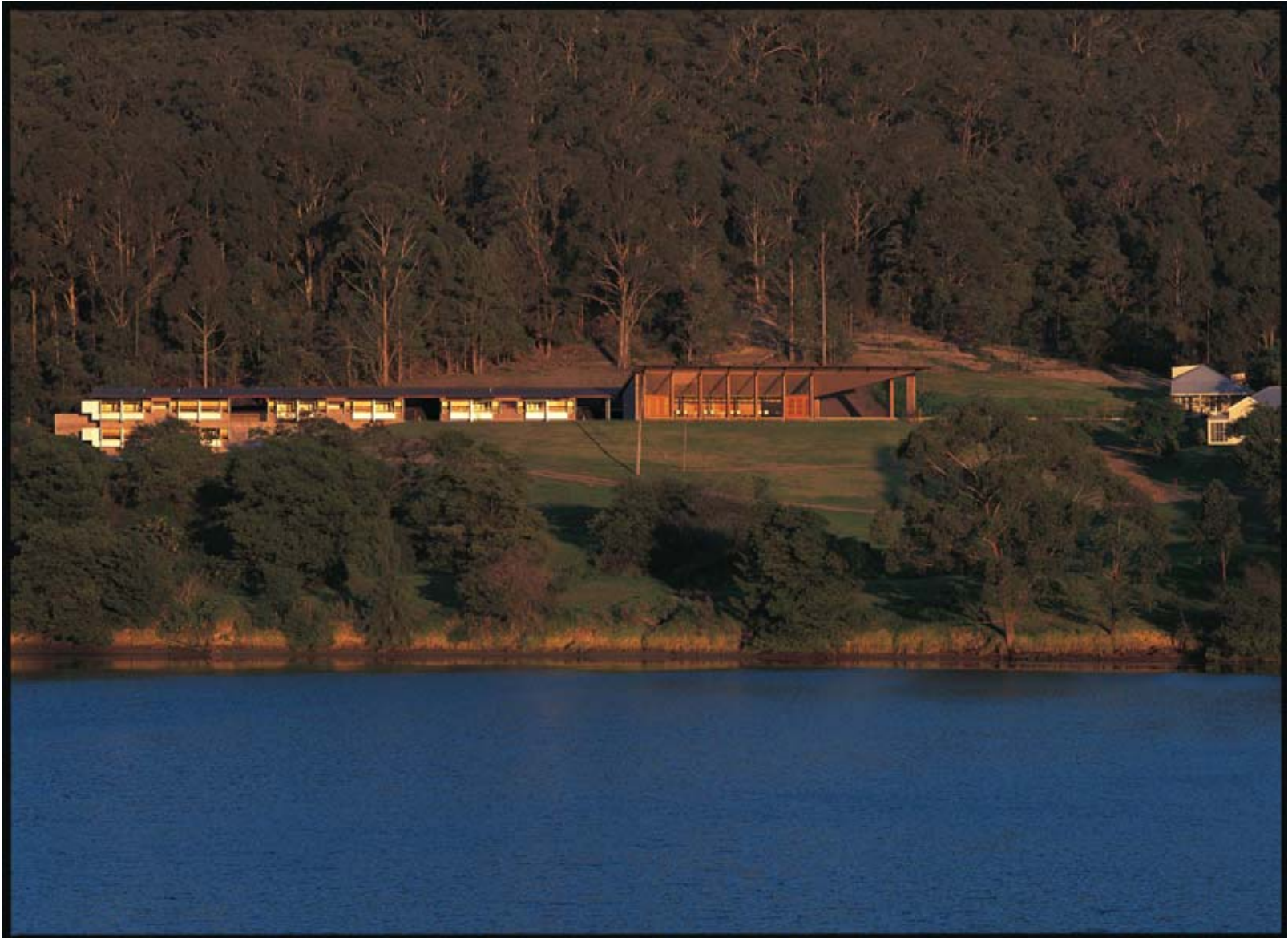


Arthur and Yvonne Boyd Art Center

1996-1999

Riversdale, West Cambewarra, New South Wales



Architects : Glenn Murcutt with Reg Lark and Wendy Lewin
Location : Riversdale, West Cambewarra, NSW
Area : 154 sqm
Year : 1996-1999

image01



Darwin

Northern Territory

Queensland

Western Australia

South Australia

Brisbane

New South Wales

Adelaide

Sydney

Victoria

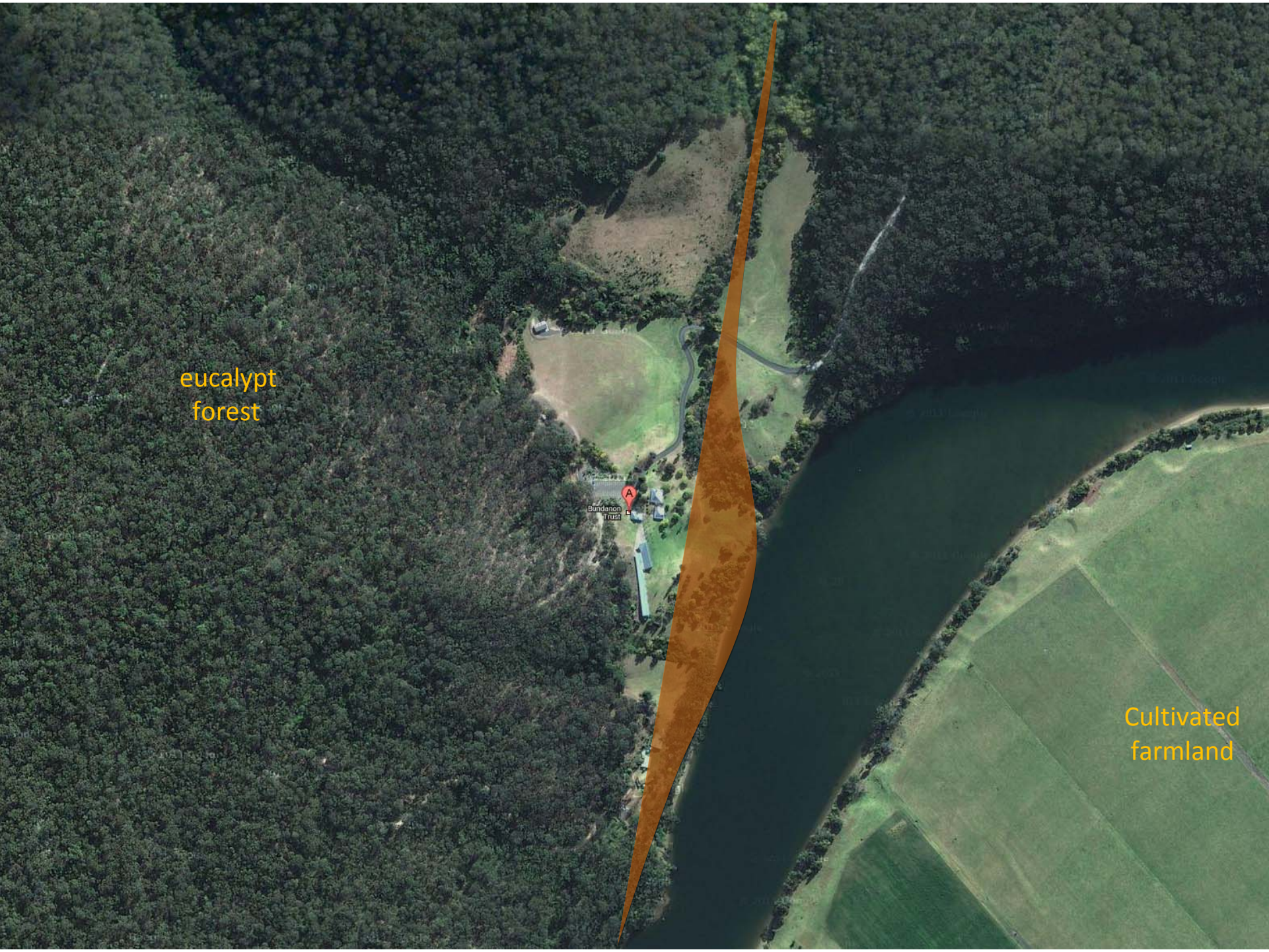
Melbourne

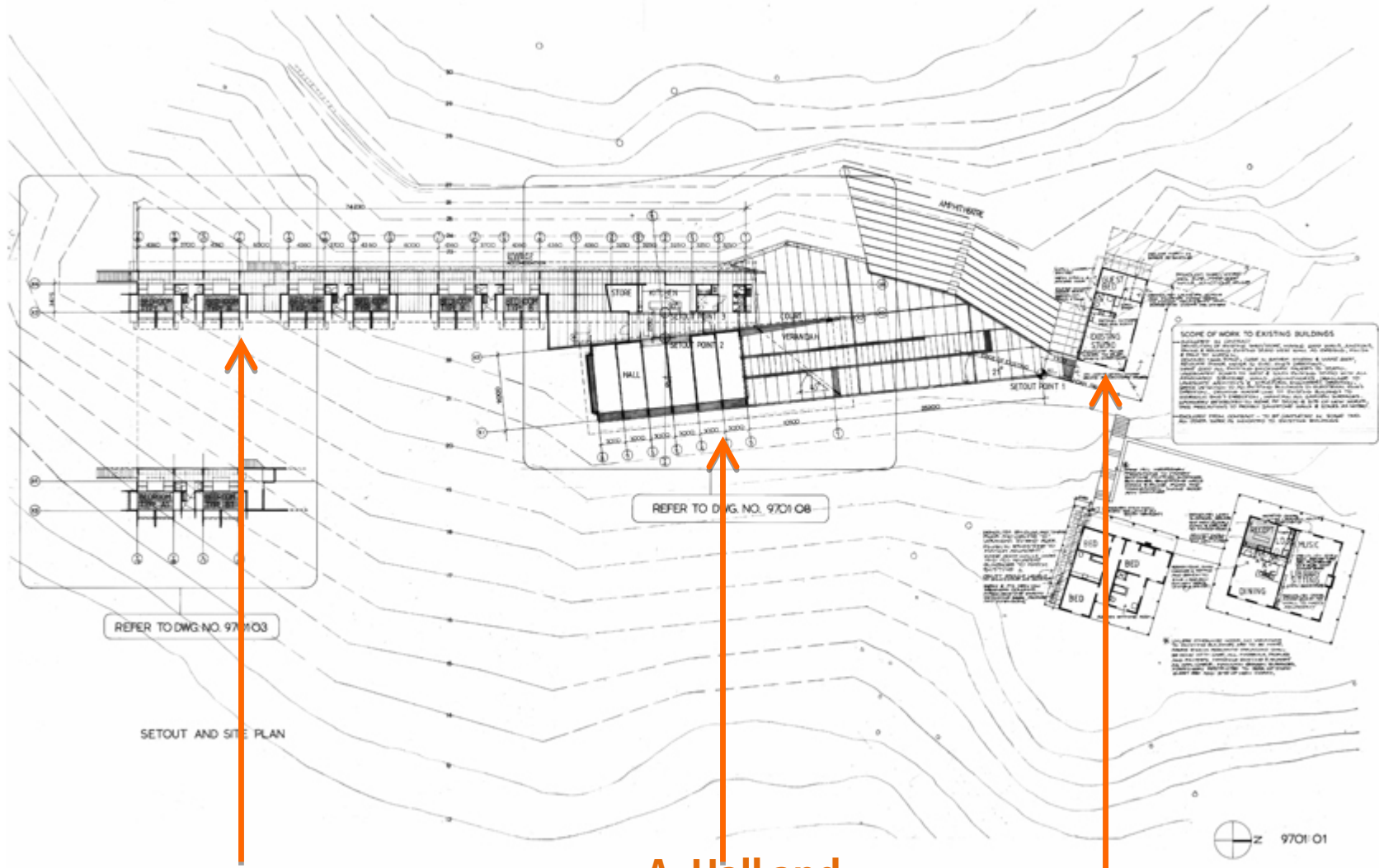
Riversdale

eucalypt
forest

Bundanon
TRUST

Cultivated
farmland





C. Dwellings

A. Hall and entrance court

B. Studio Image02



A. Hall and entrance court



Stage of
amphitheatre

Image04



Image05

公眾入口: 處於中庭的位置, 連接工作室與居住空間。擁有全景的視野, 半戶外的大門廊提供景觀休憩和舉辦活動的場所。

西側面向森林, 走道直通居住空間, 並安排了服務性空間: 廚房、衛浴以及倉庫支援公共區域。



大廳: 可容納80人座位的用餐區, 也是本案中最具有公共尺度的空間

Image06



連接大廳與服務空間的中廊，以線型的天窗拉高了空間的尺度，半透明的塑膠浪板材料變成光影的繪畫

Image07



B. Studio

Murcutt的漏斗型排水頭，經常獨立於牆面之外，彰顯將雨水資源回收利用的概念



Image09



東側的高窗增加室內
光源兼具導風的功能

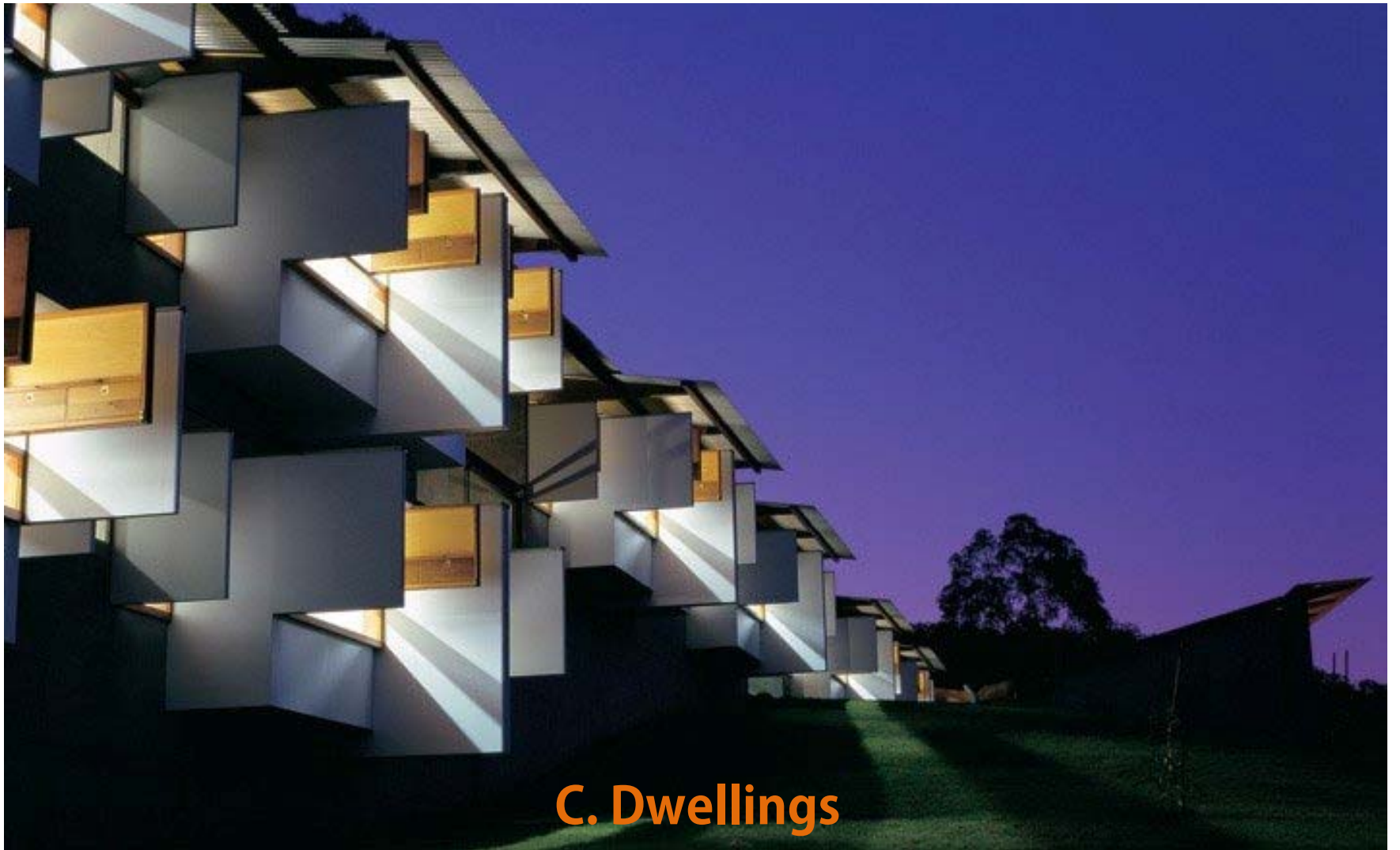
因應氣候用垂直向的格柵來通風採光，並具有視覺上的穿透性

image10



隨著時間的變化，進入室內的光線有兩種變化

image11



C. Dwellings



重複線性的排列居住空間讓他具有了公共空間的尺度感

image13

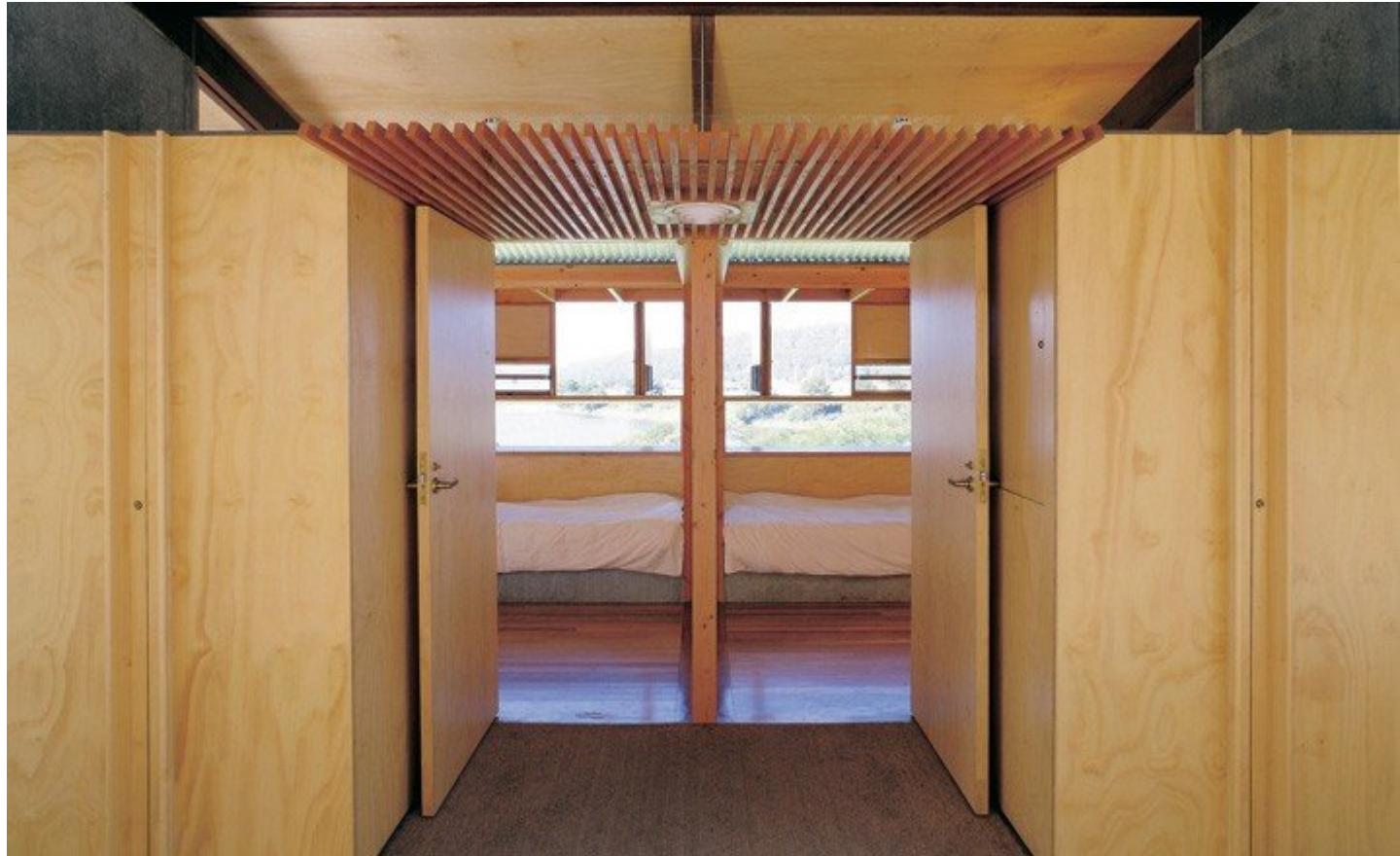


image14

每個床位都有自己的框景，可以自己調整選擇

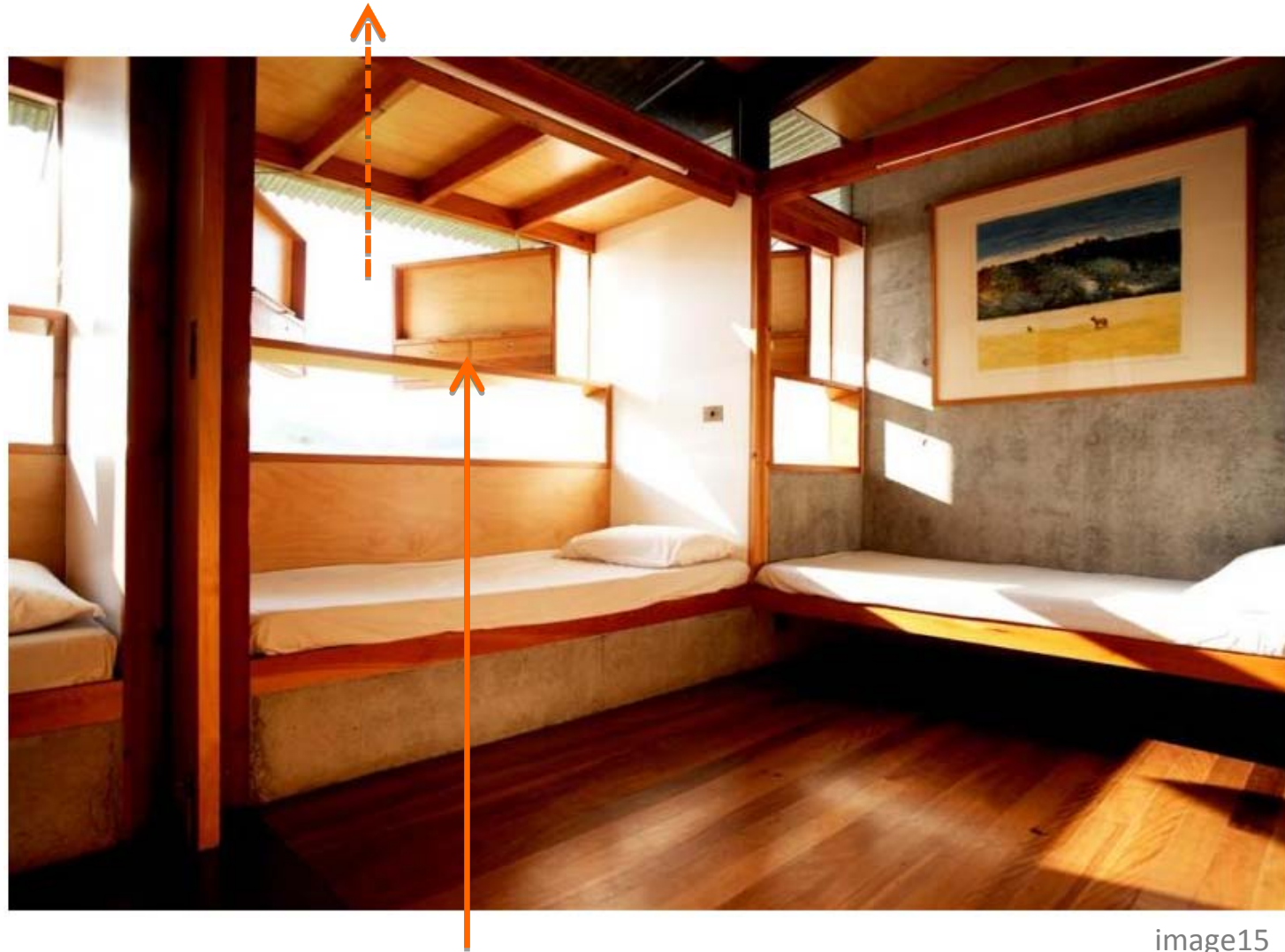


image15

格板關閉時具有screened ventilation的功能

圖片來源

- Image01/02 :
<http://www.ozetecture.org/2012/boyd-centre/>
- Image03:
<http://ozetectureblog.blogspot.tw/>
- Image04:
<http://www.monthlyimag.com.au/south-coast/attractions-on-the-south-coast-nsw/explore-the-south-coast-cultural-trail/bundanon-trust-boyd-education-centre-riversdale/>
- Image05/13 :
<http://www.mimoa.eu/projects/Australia/Riversdale/Arthur%20%2526%20Yvonne%20Boyd%20Art%20Centre>
- Image06/07/08/09/10/11:
<http://www.pushpullbar.com/forums/showthread.php?744-Riversdale-NSW-Arthur-amp-Yvonne-Boyd-Art-Centre-Murcutt-Lark-Lewin>
- Image12/14:
<http://www.wallpaper.com//gallery/architecture/glenn-murcutt-architect/17050240>
- Image15:
<http://www.bundanon.com.au/content/the-arthur-yvonne-boyd-education-centre-riversdale>